



Palm Pre Speaker Replacement

Troubleshooting and replacing the speaker.

Written By: iDeleted



INTRODUCTION

This guide will show you how to readjust or replace the speaker if it is performing poorly.



TOOLS:

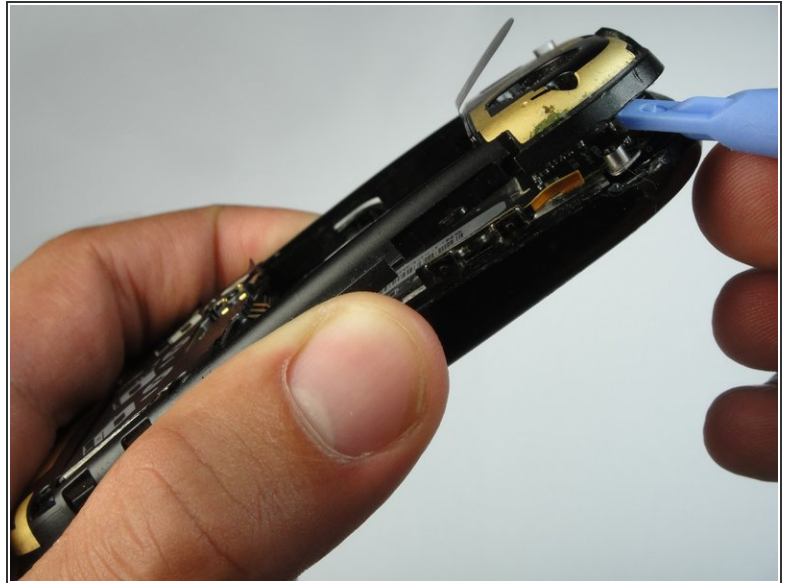
- [Spudger](#) (1)
-

Step 1 — Antenna



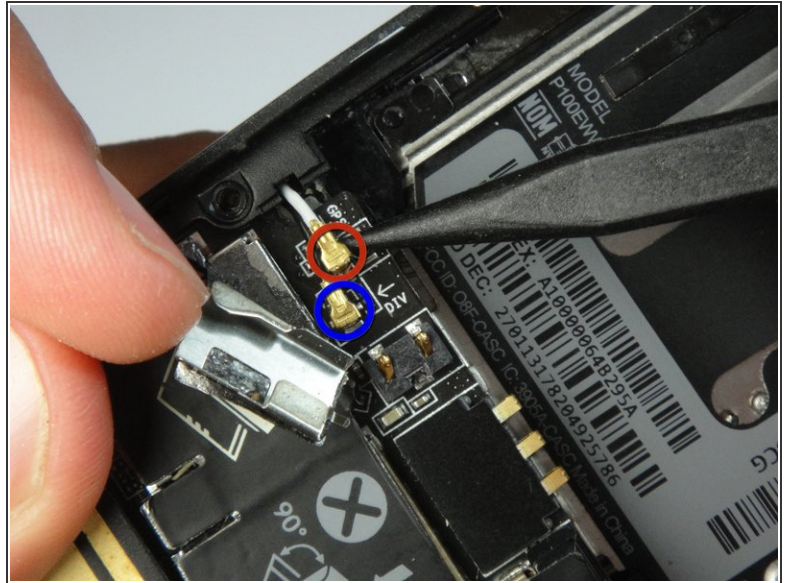
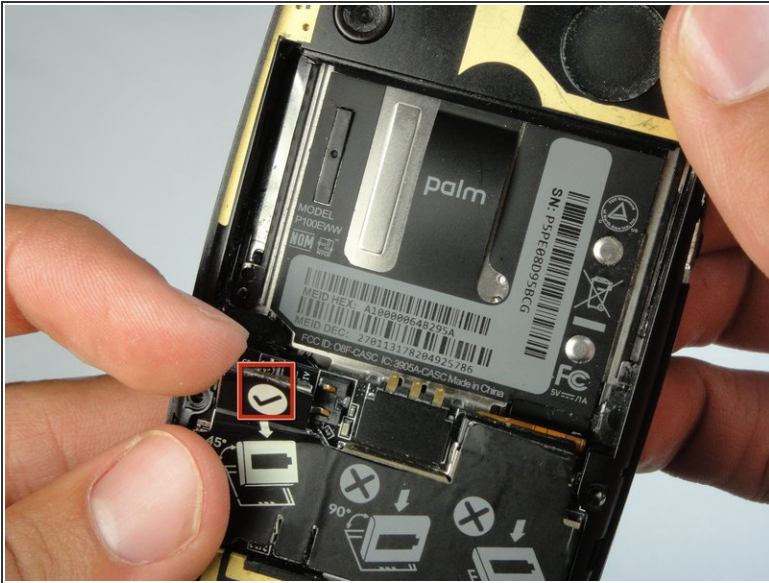
- First the back panel must be removed to reveal the battery.
- Remove the battery pack.

Step 2



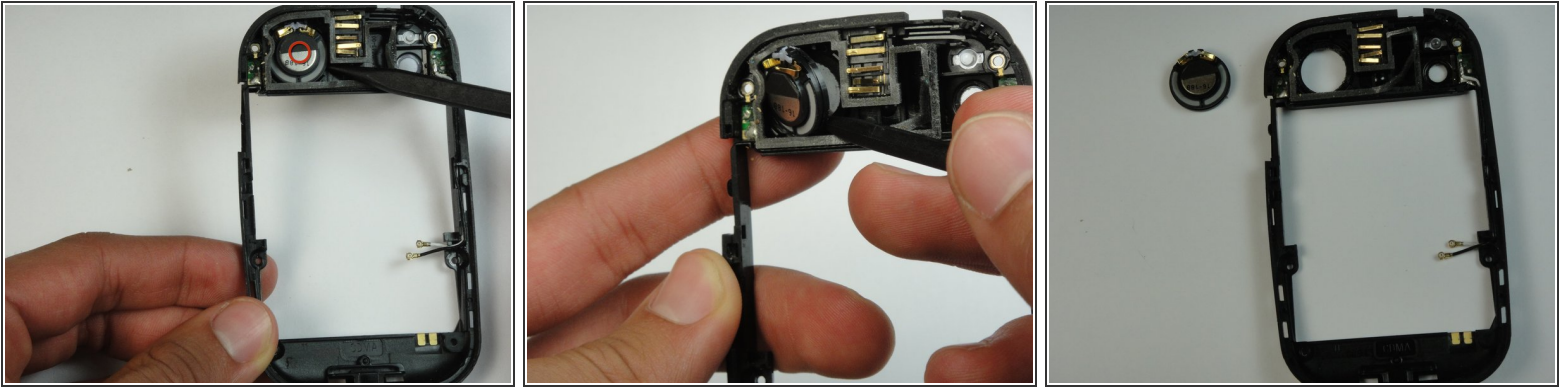
- Remove the six T5 screws necessary to separate the backplate from the phone.
- ⓘ There is one screw in the upper right that is concealed by a small sticker labeled "Palm."
- Additionally, there are interlocking tabs securing the back plate around the edges.
- Use the opening tool to carefully go around the phone releasing these tabs.

Step 3



- Lift the metal flap marked in red to reveal the antenna connectors.
- Carefully pry these the antennas from their connections, this can be done quite easily.
- ⓘ Take note of which colored wire is attached to each connection. The white wire corresponds to GPS, while the black wire corresponds to DIV, or diversity antenna.

Step 4 — Speaker



- With the backplate removed, the speaker is visible.

- Pry out speaker with spudger.

⚠ It is magnetically attached so there should be a little bit of resistance; however, there are no wires to disconnect.

ⓘ Take note of the orientation of the speaker for re-installation.

To reassemble your device, follow these instructions in reverse order.